



Damen ärmellose Fleece-Jacke

Fitted XS → XXL 300 GSM

Description

Sleeveless  
Elastic binding at neck edge, armhole and hem  
Inside back neck grosgrain loop  
Nylon coil zipper with metal puller and cord ending  
Brushed fabric with Anti piling finish on inside and outside  
Front side welt pockets with zip opening  
Inside back neck tape in recycled polyester

Composition

Shell - Polar Fleece  
100% recyceltes Polyester - 300.0 GSM  
Brushed

Care instruction

Wash similar colours together. No ironing. Close all snaps before washing. Line dry.



Herkunftsland

Weaving : China  
Dyeing : China  
Assembly : Bangladesch

Colors



Black  
C002



Desert  
Dust  
C028



Anthracite  
C253



Khaki  
C223



Mindful  
Blue  
C729



Stargazer  
C702

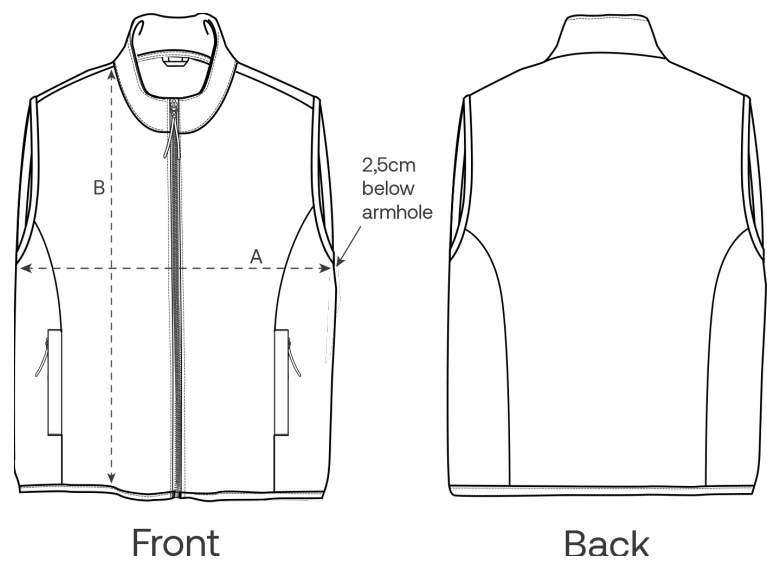


French  
Navy  
C727



Burgundy  
C244

Größenführer



Measurement in cm	XS	S	M	L	XL	XXL
A - Half Chest	45	48	51	54	58	62
B - Body Length	59	62	64	66	68	70

Verpackung

Sizes	XS	S	M	L	XL	XXL
Pieces / bag	5	5	5	5	5	5
Pieces / box	15	15	15	15	15	15